

# MONTHLY MEMBERSHIP PROGRESS REPORT

LOCATION PAKISTAN

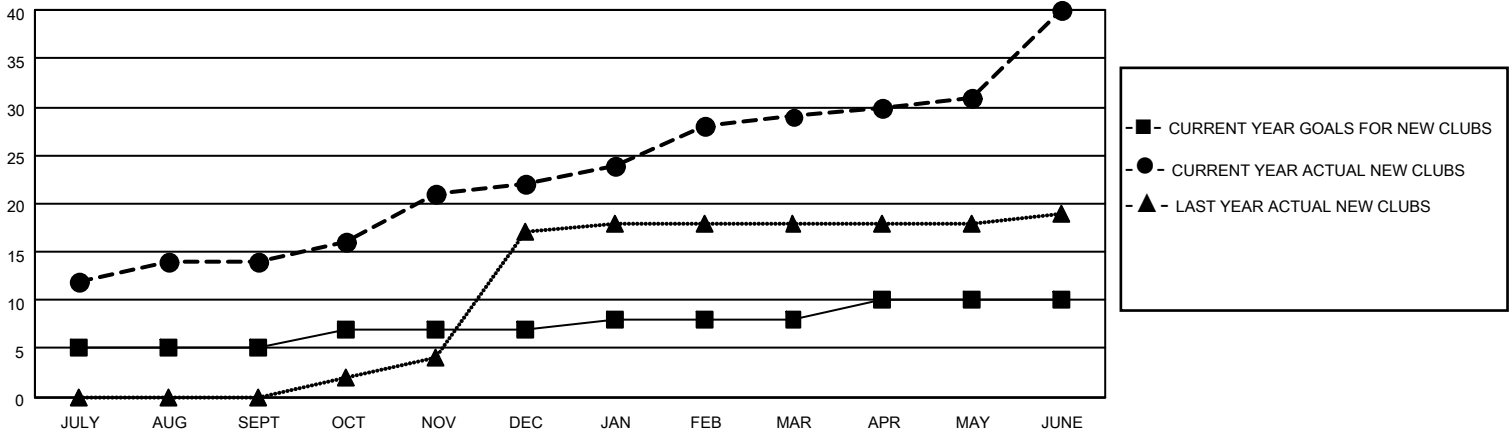
District 305 N1

Results as of: 6/30/2022

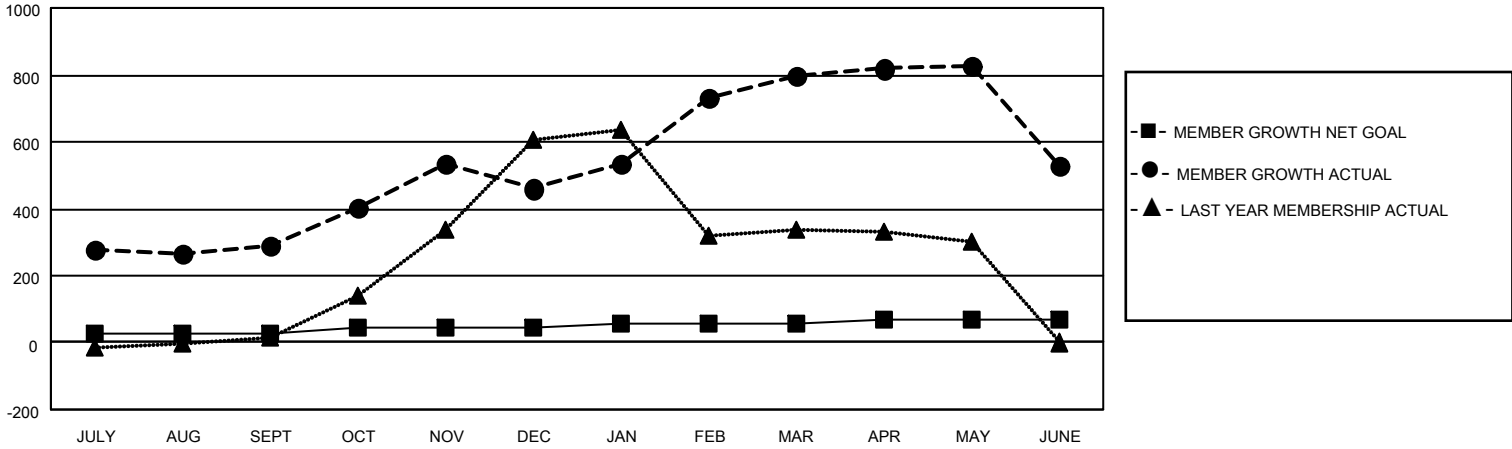
Clubs			
RESULTS FOR 2021-2022			
QUARTER	NEW CLUB GOAL	NEW CLUBS	DROPPED CLUBS
JULY/AUG/SEPT	5	14	5
OCT/NOV/DEC	2	8	4
JAN/FEB/MAR	1	7	1
APR/MAY/JUNE	2	11	6

Members			
RESULTS FOR 2021-2022			
QUARTER	MEMBER GROWTH NET GOAL	MEMBER GROWTH ACTUAL	DROPPED MEMBERS ACTUAL (including transfers)
JULY/AUG/SEPT	25	398	94
OCT/NOV/DEC	20	380	198
JAN/FEB/MAR	10	452	60
APR/MAY/JUNE	15	435	695

**GOALS AND ACTUAL NEW CLUBS CUMULATIVE**



**GOALS AND ACTUAL MEMBERS CUMULATIVE**



**DROPPED CLUBS: 16**

111 CLUBS OF 159 ADDED 1 OR MORE NEW MEMBERS

GENDER DISTRIBUTION

MALE	2,678 (77.78%)
FEMALE	765 (22.22%)
NON BINARY	0 (0.00%)
PREFER NOT TO ANSWER	0 (0.00%)

DROPPED MEMBERS

[CLICK HERE FOR CUMULATIVE MEMBERSHIP DATA](#)

DECEASED	9
CLUB CANCELLED	242
OTHER	796
<b>TOTAL</b>	<b>1,047</b>

TOTAL FAMILY UNIT MEMBERS 2,756

FAMILY MEMBERS PAYING HALF DUES 2,067